

YOUR SCHOOLS

NEWSLETTER OF THE ROCKVILLE CENTRE PUBLIC SCHOOLS

Volume 38• Number 3

March 2017

School Improvement Bond Update Issue

The community approved the School Improvement Bond in March 2013 and work began around the District immediately. The goals of the Bond included improving student safety and security, modernizing our buildings and addressing structural and property issues throughout the District. As school opened in September 2016, all major projects within the scope of the Bond were complete. The Board of Education would like to thank the community for your continued support, and share the wonderful results of your investment.



To All Rockville Centre School District Residents

If you believe that your school-age or preschool child may have a disability, please contact Dr. Noreen Leahy, Assistant Superintendent of Schools for Pupil Personnel Services and Special Education, (516)255-8928, or Dr. Orly Gadon, Chairperson of the Committee on Special Education/Preschool Education at (516) 255-8942.

South Side High School

While the School Improvement Bond included projects throughout the District, the largest and most significant project was the construction that took place at South Side High School. Two additions were constructed, and renovations were completed within the building and to the surrounding grounds. The goal of this construction was to create a safe, secure, 21st century learning environment for our students. All outdoor portable trailers and converted garages, some of which were in use for the past 25 years, were demolished, allowing all classes to be held in the main building. In addition, we have created updated science labs, a new Library/Media center and increased cafeteria space.

The first of the two additions opened in September 2015 and houses a music lab, 5 spacious art rooms, and a fitness center outfitted with advanced cardiovascular fitness equipment funded by the Carol M. White Physical Education Program (PEP) Federal Grant. These new classrooms all have expanded work spaces with easily accessible storage for supplies. The new sculpture studio features four permanent potters' wheels that allow students to spend more time working and less time setting up. A Bio Art Lab, funded by the Rockville Centre Education Foundation, fosters interdisciplinary collaboration by infusing science with art. The 2D Art Studio has tables that can be reconfigured to give students a direct line of sight to their subject and an overhead track of lights that create a professional atmosphere. The new Digital Photography Studio features an increased number of work spaces, with the most up-to-date computer software, and directly attached is a professional grade Photo Studio so that students can set up photo shoots with backgrounds and controlled lighting.

The south addition was completed in September 2016. With additions and renovations, all science classrooms were relocated within the science wing, allowing for greater teacher collaboration and safer chemical storage. The Science Research Room was greatly expanded and now includes the greenhouse. Our new Library has been designed as a media center with moveable furniture to create flexible spaces for varying learning and teaching styles. Department offices have been renovated throughout the building allowing greater collaboration for both faculty and students. The kitchen was modernized, with new equipment and the addition of a cafeteria, doubling the original seating capacity. The cafeterias have been recreated into a comfortable, spacious and inviting environment for our students. Inside the Auditorium, a new sound system was installed for use during student musical and theatrical performances. A sound and lighting booth was constructed in the back of the auditorium, eliminating the use of ladders for access during performances and creating a safer, more professional theatre.

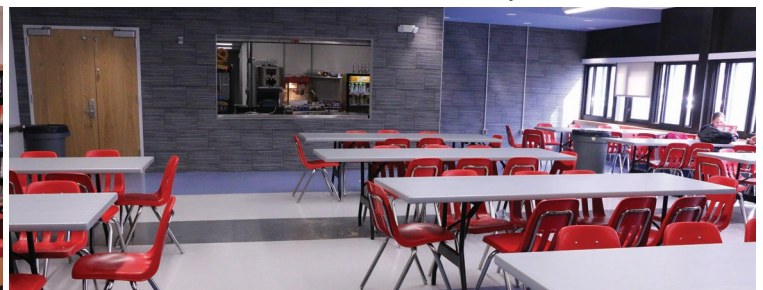
South Side High School's campus was updated with the installation of two beautiful new turf fields for use by our Physical Education classes and student athletes, as well as our community. Our main field also features new bleachers, a press box and a concession stand, enhancing our campus to one that students and community members are proud of. Our practice turf field permits the scheduling of more games and practices at the High School, decreasing the amount of busses needed for our teams and reducing school district expenses.



New Press Box, Bleachers and Turf Field



Library



One of Two Cafeteria Spaces

School Improvement Bond Expenditures

South Side High School

North Addition	\$6,410,000
South Addition	\$15,000,000
Interior Renovations	\$4,260,000
Turf Fields/ Track/ Bleachers/ Press Box	\$3,025,000
Lockers	\$420,000
Total South Side High School:	\$29,115,000

Watson Elementary School

New Construction	\$2,700,000
Playground	\$112,000
Total Watson Elementary School:	\$2,812,000

District-wide

Air-conditioning in all Classrooms	\$1,080,000
Main Assembly Space Air-conditioning in Elementary Schools	\$1,158,000
Door Replacements	\$660,000
Locksets & Door Hardware	\$360,000
Mechanical Fresh Air	\$1,770,000
Security Upgrades	\$610,000
Roof Replacements & Repairs	\$2,670,000
Other Interior Maintenance & Repairs	\$3,496,000
Public Announcement System Replacements	\$260,000
Fire Alarm System Replacements	\$200,000
Auditorium and Band/Choral Room Rehabilitation	\$550,000
Library and Music Room Renovations - SSMS	\$560,000
Auditorium Rehabilitation - SSMS	\$335,000
Track Replacement - SSMS	\$290,000
Total District-wide:	\$13,999,000

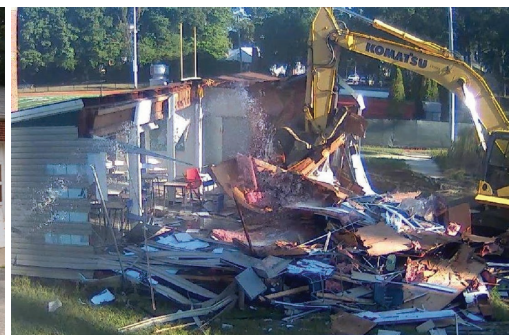
Final School Improvement Bond Amount: \$45,926,000



Science Research Classroom



Bio Art Classroom



Removal of Portables

Watson Elementary School

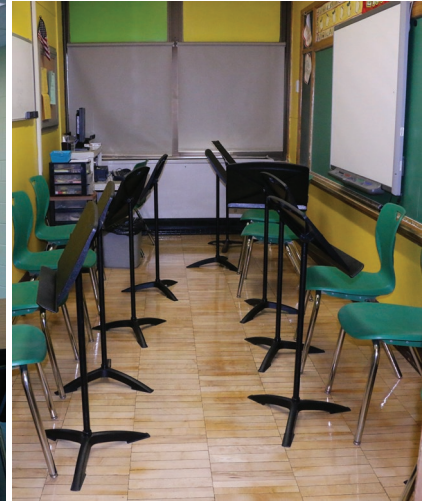
Watson Elementary School received a new addition, housing three new bright and spacious classrooms and a small-group instructional space. This addition was necessary as a result of growing enrollment. Music and Art classes are now taught in their own dedicated rooms, eliminating the need for teachers to travel to classrooms with their equipment on a cart. Band and Orchestra lessons are now also held in a space of their own. A new playground equipped with monkey bars, slides and a cable bridge was installed, making recess time even more fun. The parking lot was redesigned and expanded to allow for more spots on school grounds and reducing the number of cars on neighboring streets.



New Classroom



Small Instruction Space



Dedicated Band & Orchestra Practice Space



New Classroom



New Classroom



New Playground

South Side Middle School

The Middle School renovations feature major work done in both the Library and Auditorium. The Library was redesigned to include modular, moveable furniture which can easily be reconfigured to meet varying instructional needs. With the additional space, two classes have the ability to use the Library at any given time. Students can also take advantage of this space before school and during their Study periods. The Auditorium received a total facelift, with new lighting and sound systems. It was painted, carpeting replaced, and chairs rehabilitated and is now renovated to highlight its beauty, comfort and elegance.

Additional projects at the Middle School included the installation of a new track, roof replacements, and renovated band and choral rooms with proper ADA (Americans with Disabilities Act) access.



Library



Library



Auditorium



Auditorium



New Track



Renovated Band Room



BOARD OF EDUCATION

Rockville Centre Public Schools
128 Shepherd Street Rockville Centre, NY 11570
(516)255-8957
MARK MASIN, President
LIZ DION, Vice President
JOHN O'SHEA, Secretary
GREGG SPAULDING, Trustee
MAYDA KRAMER, Trustee
WILLIAM H. JOHNSON, Ed.D., Supt. of Schools
ROBERT A. BARTELS, Asst. Supt. of Schools
CHRISTOPHER J. PELLETIERI, Asst. Supt. of Schools
NOREEN LEAHY, Ed.D., Asst. Supt. of Schools

District-Wide

The health and safety of our students were primary goals for the work undertaken by this Bond. Air-conditioning has been installed in all classrooms throughout the District, as well as the main assembly spaces in the elementary schools, which function as our gymnasiums, cafeterias and auditoriums.

Safety, ADA (Americans with Disabilities Act) compliant door handles were installed in all classrooms. These locksets enable teachers to secure students in case of an emergency lockdown. Additional security cameras were installed at all building entrances with high resolution displays at both South Side Middle and High schools to assist security personnel in monitoring activity in the buildings. A generator, designed to run the computer and phone system allowing communication in the event of a major power failure, was installed at the Administration building.

DATES TO REMEMBER

April	
5	Board of Education Public Work Session
10-18	Schools Closed for Passover/Easter Recess
19	Schools Reopen
20	Board of Education Regular Meeting & Preliminary Budget Hearing
May	
3	Board of Education Budget Hearing & Public Work Session
16	Annual School Board Election & Budget Vote
25	Board of Education Regular Meeting

Non-Profit
Organization
U.S. POSTAGE
PAID
Rockville Centre, NY
Permit # 273