

# YOUR SCHOOLS

NEWSLETTER OF THE ROCKVILLE CENTRE PUBLIC SCHOOLS

Volume 34 • Number 4

March 2013

## ROCKVILLE CENTRE SCHOOL DISTRICT

# SCHOOL IMPROVEMENT BOND

# VOTE MARCH 19, 2013

### Major projects include:

- Expanding South Side High School to replace 12 classrooms in portable trailers and converted garages. By bringing the classroom space inside, we will be able to lock the building which currently remains unlocked, limit entry to one door and dramatically tighten security.
- Adding three classrooms, small-group instruction space and additional parking at Watson Elementary School.
- Providing air-conditioning for all instructional spaces in the District and main assembly spaces in the elementary schools.
- Modernizing South Side High School's outdated, inadequate science labs.
- Upgrading athletic facilities throughout the District.
- Updating music, theater and arts facilities throughout the District.
- Addressing structural and site issues in the District's buildings.

**Average household  
tax increase: \$128**

### Inside This Issue

- ♦ School Improvement Bond Projects
- ♦ Proposed Project Timeline
- ♦ SSHS and Watson Plans
- ♦ Your Questions Answered
- ♦ Financial Facts

### *A letter from the Board of Education:*

On Tuesday, March 19th, from 7 AM to 9 PM residents of the Rockville Centre School District will have the opportunity to vote on a \$45.9 million bond to address the most essential capital needs in our schools. These needs were identified by teams of students, parents and staff in each building.

Capital improvements in our schools have been put aside for years but can no longer be delayed. The bond is a fiscally conservative plan that addresses maintenance and improvements beyond what we can fund in our annual budgets. The safety and security of our students is our highest priority.

We encourage you to become informed by reading this brochure, attending our meetings and visiting our website at [www.rvcschools.org](http://www.rvcschools.org). Please email any questions to [boe@rvcschools.org](mailto:boe@rvcschools.org).

Save the date. Your vote on March 19th counts.

*This referendum is about providing our students with safe school facilities that support educational excellence.*

## THESE ARE YOUR SCHOOLS, THEY NEED YOUR SUPPORT

[www.rvcschools.org](http://www.rvcschools.org)

# School Improvement Bond Projects

			Improvements				
		Construction	Safety/ Security	Environmental	Building	Site	
New Construction—Eliminate Portable and Garage Classrooms / Improve Security		SSHS	\$18,110,000				
Interior Renovation		SSHS			\$7,410,000		
New Construction		Watson	\$ 2,700,000				
Door Replacements		District-wide		\$660,000			
PA/Intercom/Alarm Repairs		District-wide		\$513,000			
Smoke Doors/Stair Enclosures		District-wide		\$470,000			
Locksets and Door Hardware		District-wide		\$360,000			
Security Cameras		District-wide		\$200,000			
Playground Surface Repairs & Gym Wall Padding Replacement		District-wide		\$153,000			
Air Conditioning - Classroom and Select Public Spaces		District-wide			\$2,378,000		
Mechanical Fresh Air and Exhaust Fans		District-wide			\$1,962,000		
Boiler Replacement		District-wide			\$ 570,000		
Roofing Repairs/Replacements		District-wide				\$2,883,000	
Auditorium and Band/Choral Room Rehabilitation		District-wide				\$1,108,000	
Masonry Reconstruction		District-wide				\$ 718,000	
Other Reconstruction Projects		District-wide				\$ 603,000	
Library and Music Room Renovations		SSMS				\$ 560,000	
Repairs to meet Building Code Requirements		District-wide				\$ 424,000	
Replace Clock System		District-wide				\$ 218,000	
Plumbing Repairs		District-wide				\$ 158,000	
Flooring Repairs		District-wide				\$ 88,000	
Synthetic Turf Fields		SSHS				\$2,080,000	
New Bleachers/Press Box/Lighting		SSHS				\$ 655,000	
Running Track Repairs/ Other Athletic Facility Repairs		District-wide				\$ 610,000	
Paving/Drainage		District-wide				\$ 335,000	
Category Subtotals			\$20,810,000	\$2,356,000	\$4,910,000	\$14,170,000	\$3,680,000
FINAL BOND AMOUNT: \$45,926,000							

## PROPOSED PROJECT TIMELINE

If the School Improvement Bond is approved on March 19, 2013, proposed work will begin after permits and New York State approvals are obtained. A tentative schedule of major projects is as follows:

### SUMMER 2013

- ✓ Begin security upgrades
- ✓ Begin classroom A/C installation
- ✓ Begin building repairs and improvements District-wide

### WINTER 2014

- ✓ Install main turf field at SSHS

### SUMMER 2014

- ✓ Break ground for SSHS first addition
- ✓ Break ground for Watson addition

### SUMMER 2015

- ✓ Complete first addition at SSHS
- ✓ Eliminate portable / garage classrooms at SSHS

### SUMMER 2016

- ✓ Complete second addition at SSHS



Damaged roofs throughout the District.



One of SSHS's small and outdated science labs.

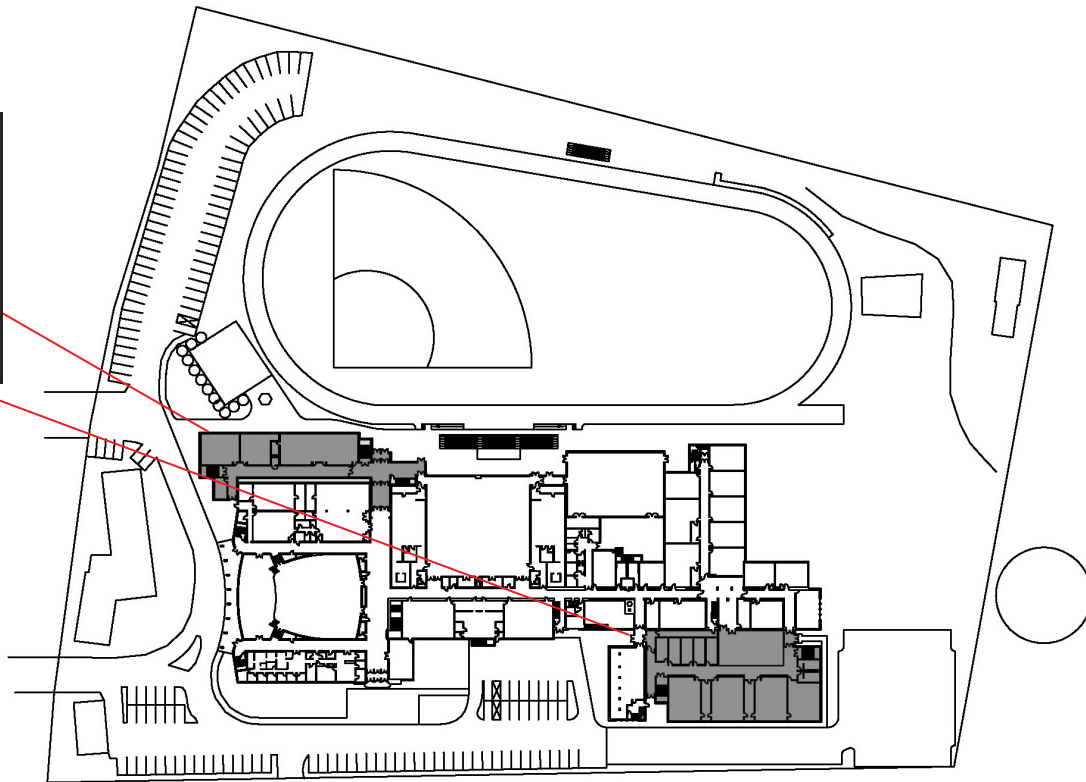


Damaged ceiling from roof leaks.

# School Improvement Bond Projects

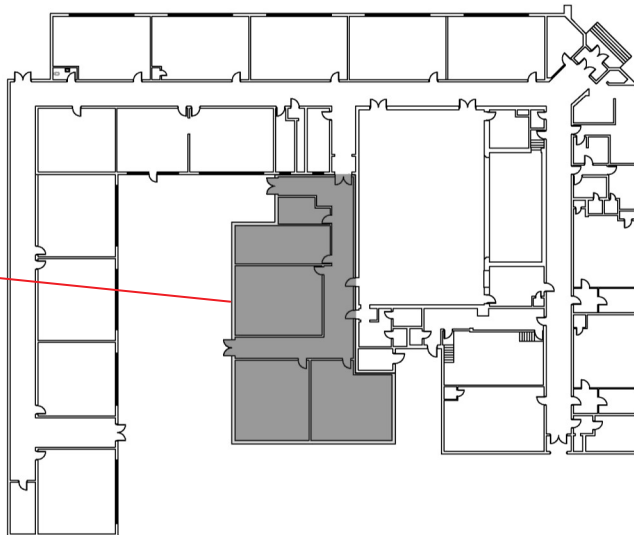
## Plans for South Side High School

New construction at SSHS will incorporate 12 classrooms currently housed in outdoor structures into the main building.



## Plans for Watson Elementary School

New construction at Watson will add three classrooms and one small instruction space.



*Bleachers at SSHS are in poor condition.*



*New cafeteria space at SSHS will accommodate all students during lunch.*



*Broken auditorium seats at SSMS.*



# YOUR QUESTIONS ANSWERED

## WHAT AM I VOTING ON?

The March 19th School Improvement Bond referendum will present voters in the Rockville Centre School District with the opportunity to vote on a \$45,926,000 bond to fund capital improvements. Structural additions at South Side High School and Watson Elementary School and District-wide renovations will improve our students' safety and security and support educational excellence.

## WHY A BOND, NOW?

This is work that needs to be done. There are conditions in our buildings that need attention. The Bond addresses maintenance and improvements beyond what we can fund in our annual budgets. With interest rates still low and market conditions favorable, the District can benefit from reduced borrowing and construction costs.

## WHY DOES SO MUCH WORK HAVE TO BE DONE NOW?

Our school buildings are all over 55 years old, many were built in the 1920's. Much of the major infrastructure and systems in our schools are original. Over the course of time, buildings need capital improvements. For many years, in response to budgetary constraints, the District has postponed major projects. Now, we have reached the point where temporary "patchwork" repairs no longer suffice. The cost of on-going repair work makes the capital projects proposed in this bond a cost-effective, long-term solution for the District.

## HOW ARE WE IMPROVING SECURITY IN OUR SCHOOLS?

South Side High School is unlocked. The new additions will allow us to lock the building and limit access. Across the District we will install additional cameras and replace doors and locksets.

## WHY AN ADDITION AT WATSON?

Over the past few years Watson has seen a population boom and currently has sections in both grades 1 and 2 that exceed traditional limits. There is a projected incoming kindergarten class of more than 50 students. With 12 classrooms, Watson has no space for any additional classes or for small group instruction. The proposed addition will add three classrooms and a small-group instruction space.

## WHY AIR CONDITIONING?

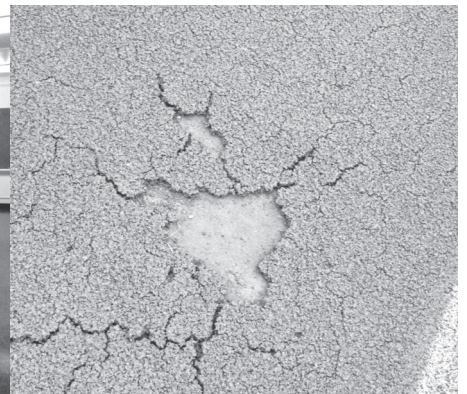
The health and safety of our students are our highest priority. We start school in early September and end in late June. When our buildings become unbearably hot, the focus on learning diminishes.



*The boiler at Wilson Elementary School.*



*A portable classroom at SSHS has interior beams that obstruct students' vision.*



*Cracked track surface at SSHS.*

## FINANCIAL FACTS

As determined by the Nassau County Assessor's Office, the average home value in Rockville Centre is:

**\$532,000**

The Tax impact of a \$45,926,000 School Improvement Bond on the average home in the Rockville Centre School District, assuming \$20M at 4.0% for 30 years and \$25.926M at 3.5% for 20 years is:

**\$128**

Tax impact on other Properties:

Assessed Value	Increase due to Bond
\$ 400,000	\$ 97
\$ 600,000	\$145
\$ 800,000	\$193
\$1,000,000	\$242

## YOUR QUESTIONS ANSWERED, CONTINUED

### WHY TURF AT SOUTH SIDE HIGH SCHOOL?

There is one main athletic field at South Side High School that is in nearly constant use by school teams and Village organizations. A grass field needs rest to rejuvenate and to maintain its integrity. Overuse has compacted and stripped the field, creating drainage problems and uneven playing surfaces. The installation of artificial turf on this field, as well as turf and lights on the second small practice field addresses those issues and will also allow our teams to practice and play official games at home, alleviating congestion on Village fields and saving the District transportation costs.

### I DON'T HAVE ANY CHILDREN IN DISTRICT SCHOOLS. WHY SHOULD I SUPPORT THIS BOND?

Home values in any community are in large measure a reflection of the perceived excellence of its school district. Real estate agents will tell you that homebuyers with children typically place significant, if not major, importance on the school district when selecting the community in which they will live. It's been years since we've undertaken any major renovations or improvements in our buildings. Safe, modern school facilities will improve the perception homebuyers have of our District, which in turn impacts real estate values for everyone.



*Damaged playground base creates safety issues.*

*Classroom space at SSMS in a converted garage.*

*Patchwork on the track at SSMS.*



## BOARD OF EDUCATION

Rockville Centre Public Schools

128 Shepherd Street Rockville Centre, NY 11570

(516)255-8957

LIZ DION, President

MARK MASIN, Vice President

GREGG SPAULDING, Secretary

JOHN O'SHEA, Trustee

MAYDA KRAMER, Trustee

WILLIAM H. JOHNSON, Ed.D., Supt. of Schools

ROBERT A. BARTELS, Asst. Supt. of Schools

CHRISTOPHER J. PELLETTIERI, Asst. Supt. of Schools

NOREEN LEAHY, Asst. Supt. of Schools

The District uses a communication process for emergency notifications. School closings and other urgent messages will be sent through Connect-Ed, a telephone and email communication system. Contact information on file for students and staff will be utilized for these notifications. Other community members who wish to receive District-wide messages should send an email with their name, phone number and/or email address to [connected@rvcschools.org](mailto:connected@rvcschools.org) or send a letter to the Business Office in the Administration Building at 128 Shepherd Street, Rockville Centre, NY 11570 requesting to be added to this messaging list. Parents who would like to change their contact information should contact the main office of their child's school.

# VOTING INFORMATION

2013  
School Improvement  
Bond  
Referendum

Tuesday,  
March 19, 2013  
7 AM – 9 PM

South Side  
High School  
Gymnasium  
140 Shepherd Street  
Rockville Centre

## Voting Information

Only registered voters may participate in the Rockville Centre School Improvement Bond Referendum. A qualified voter must be:

- ✓ 18 years of age
- ✓ a resident of the Rockville Centre School District for 30 days prior to the vote
- ✓ a U.S. citizen
- ✓ a duly registered voter

## Voter Registration

Voters can register in the office of the District Clerk at the Rockville Centre Administration building, 128 Shepherd Street, Rockville Centre, New York, between the hours of 8:15 AM and 4:15 PM on school business days through March 13, 2013.

## Absentee Ballots

Registered voters who require an absentee ballot can pick up an application at the District Clerk's office. They can also call (516) 255-8921 to receive an application by mail, or download an absentee ballot application from the District's website at [www.rvcschools.org](http://www.rvcschools.org).

Applications for absentee ballots must be received by the District Clerk at least seven days before the election if the ballot is to be mailed to the voter. If the ballot is to be filled out in the District Clerk's office, voters have until the day before the vote to pick up the ballot.